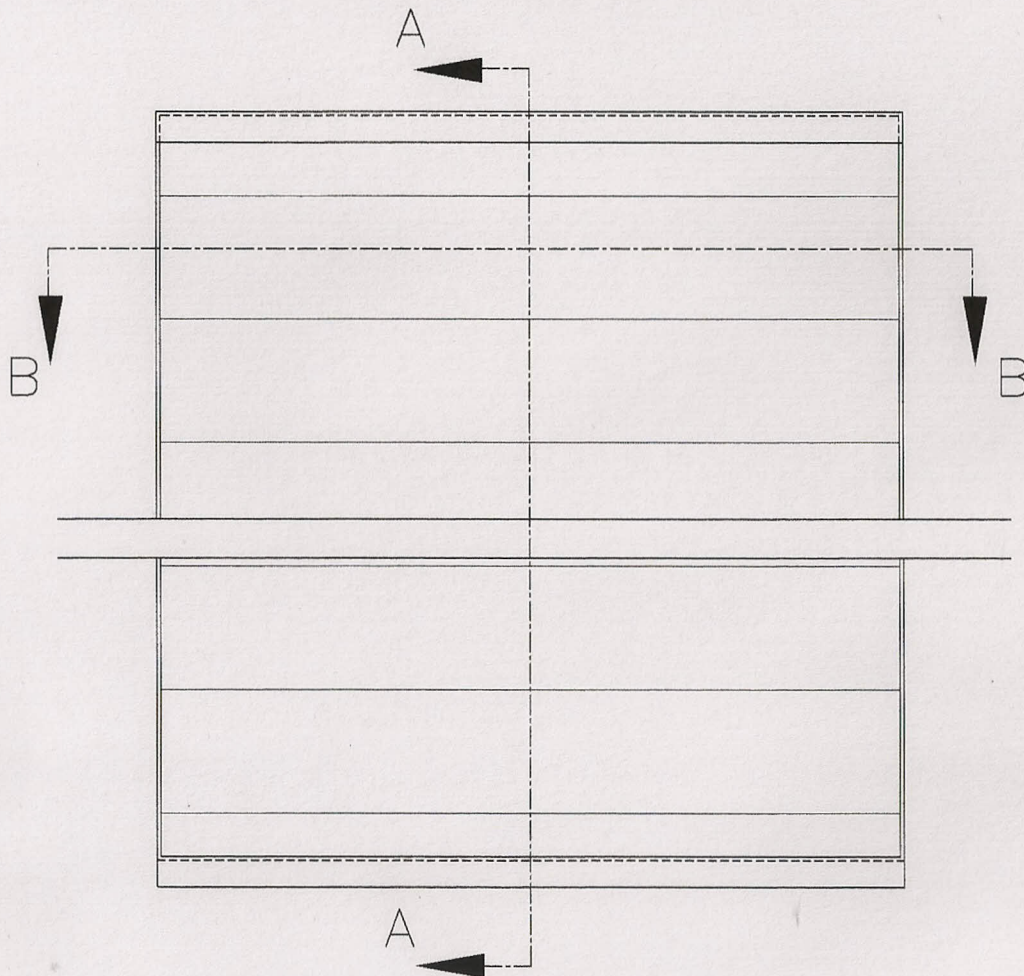
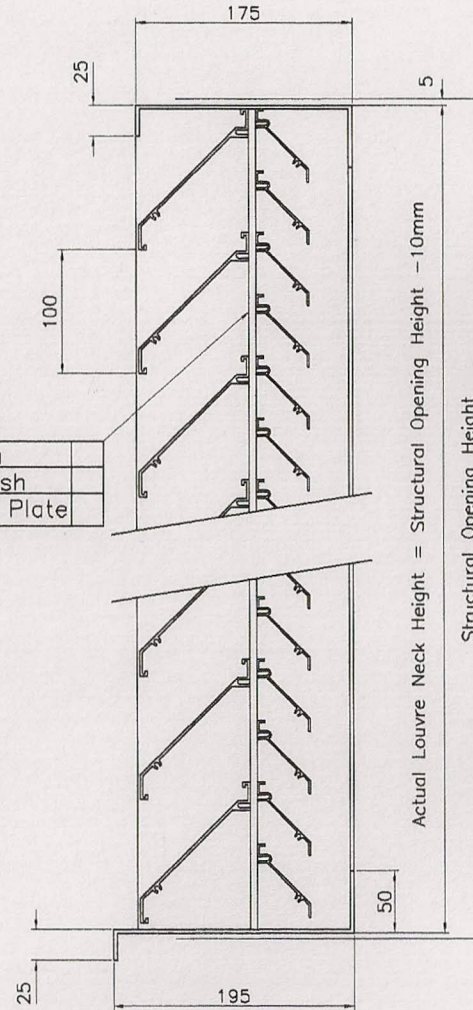


Sectional Plan On Arrow B.B.



Structural Opening Sizes (mm)			
Qty	Ref	Width (mm)	Height (mm)

Birdmesh	
Insectmesh	
Blanking Plate	



Sectional Elevation On Arrow A.A.

Notes
 All dimensions must be checked on site and not scaled from this drawing

WL100&WL50 Double Bank
 Material
 Extruded Aluminium Frame & Blades.

Blade Thickness 1.5mm
 Frame Thickness 3mm
 Louvre Depth 150mm
 Louvre Pitch 100mm
 Blade Angle 45°

Finish;
 Polyester Powder Coated
 Colour Ref _____

Date	Revisions

LINCO ENGINEERING
 MIDLANDS LTD
 88 Heming Road,
 Washford Industrial Estate,
 Redditch,
 WORCS,
 B98 0EA,
 TEL: (01527) 518333
 FAX: (01527) 518666
 e-mail: linco@btconnect.com
 www.lincoengineering.com



Client. _____

Project. _____

Drawing Title
 WL100/WL50
 Double Banked
 Louvre System

Scale 1:2

Date Jan08 Drawn by:K.P

Dr. No. WL100/50 D/B	Rev.
-------------------------	----------