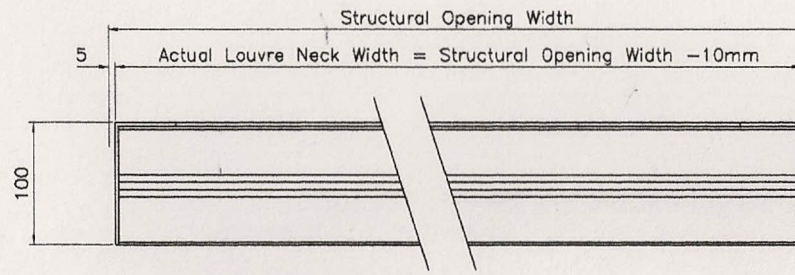
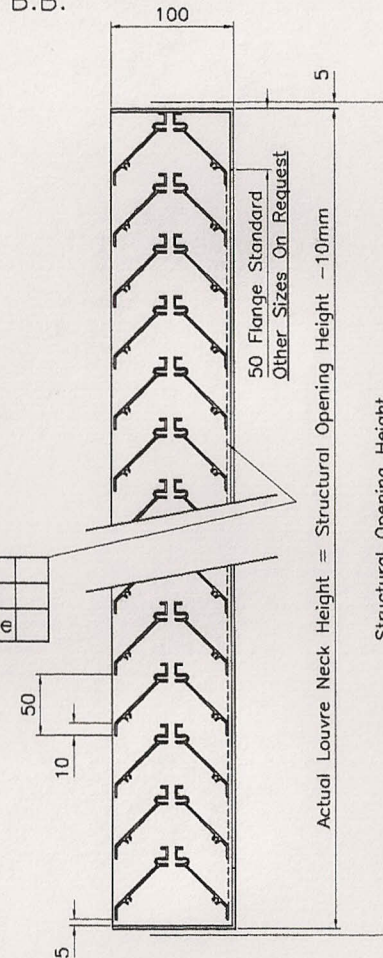
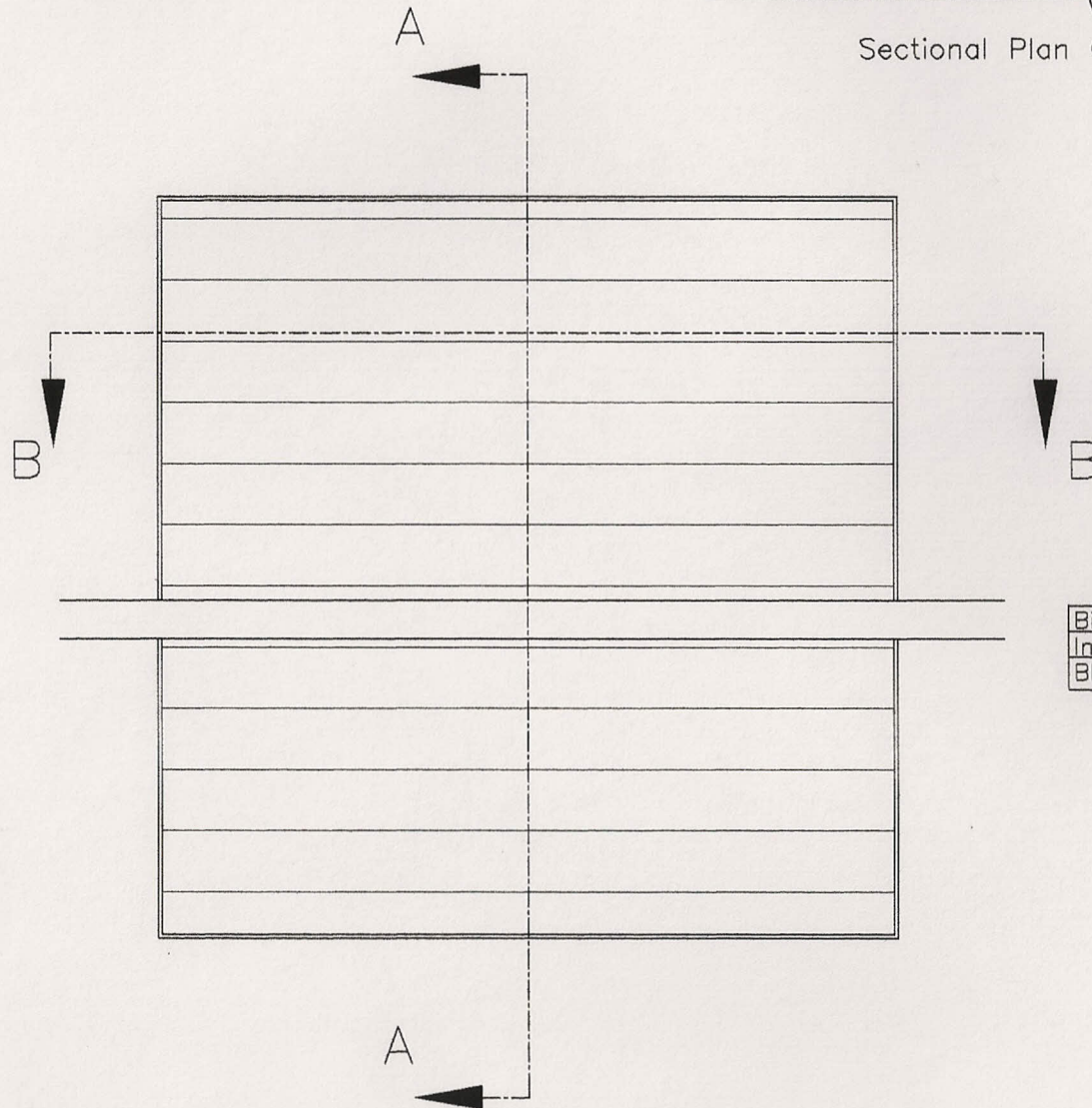


Structural Opening Sizes (mm)			
Qty	Ref	Width (mm)	Height (mm)



Sectional Plan On Arrow B.B.



Sectional Elevation
On Arrow A.A.

Birdmesh	
Insectmesh	
Blanking Plate	

Notes
All dimensions must be checked on site and not scaled from this drawing

WL50 Double Bank Louvre

Material
Extruded Aluminium Frame & Blades.

Blade Thickness 1.5mm
Frame Thickness 3mm
Louvre Depth 100mm
Louvre Pitch 50mm
Blade Angle 45°

Finish;
Polyester Powder Coated
Colour Ref _____

Date	Revisions

LINCO ENGINEERING
MIDLANDS LTD
88 Herring Road,
Washford Industrial Estate,
Redditch,
WORCS,
B98 0EA
TEL: (01527) 518333
FAX: (01527) 518666
e-mail: linco@btconnect.com
www.lincoengineering.com

Client. _____

Project. _____

Drawing Title
WL50 Double Bank
Aluminium Louvre
Recessed Frame

Scale 1:2

Date Jan08 Drawn by K.P

Drq. No. WL50 Double 02	Rev. -
----------------------------	-----------