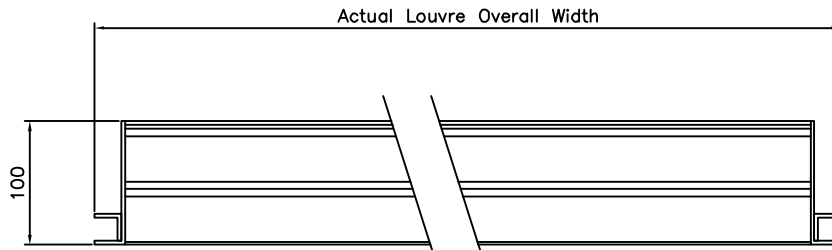
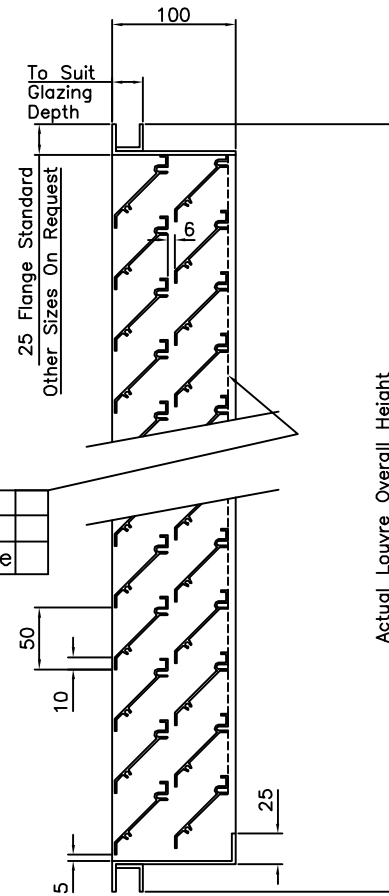
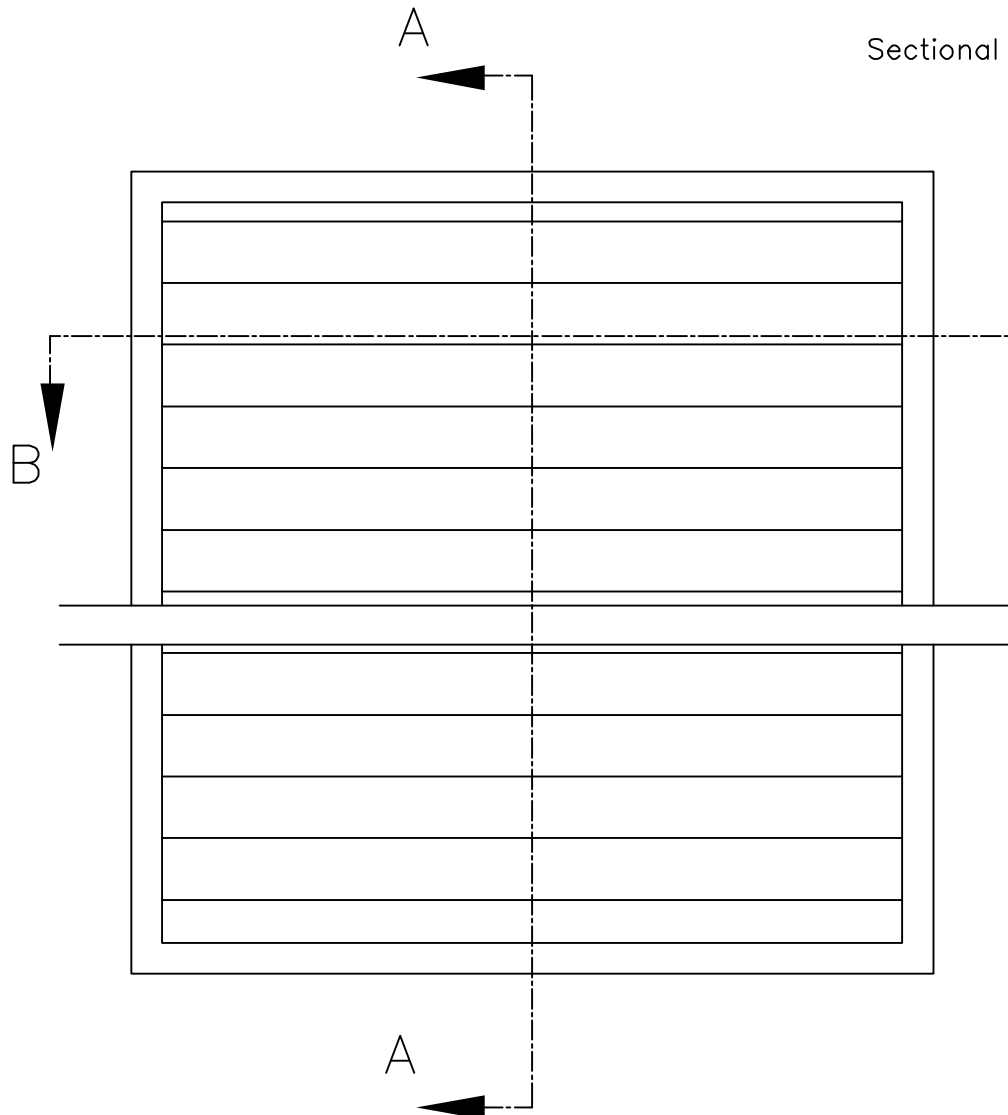


Overall Louvre Sizes (mm)			
Qty	Ref	Width (mm)	Height (mm)



Sectional Plan On Arrow B.B.



Sectional Elevation  
On Arrow A.A.

Birdmesh	
Insectmesh	
Blanking Plate	

Notes  
All dimensions must be checked on site and not scaled from this drawing

**WL50 Double Bank Louvre**

Material  
Extruded Aluminium Frame & Blades.

Blade Thickness 1.5mm  
Frame Thickness 3mm  
Louvre Depth 100mm  
Louvre Pitch 50mm  
Blade Angle 45°

Finish;  
Polyester Powder Coated  
Colour Ref \_\_\_\_\_

Date	Revisions

LINCO ENGINEERING  
MIDLANDS LTD  
88 Heming Road,  
Washford Industrial Estate,  
Redditch,  
WORCS,  
B98 0EA,  
TEL: (01527) 518333  
FAX: (01527) 518666  
e-mail: linco@btconnect.com  
www.lincoengineering.com

Client. \_\_\_\_\_

Project. \_\_\_\_\_

Drawing Title

WL50 Double Bank  
Aluminium Louvre  
Glazing Frame

Scale 1:2

Date Jan08 Drawn by: K.P

Dr. No.	Rev.
WL50 Double 06	-