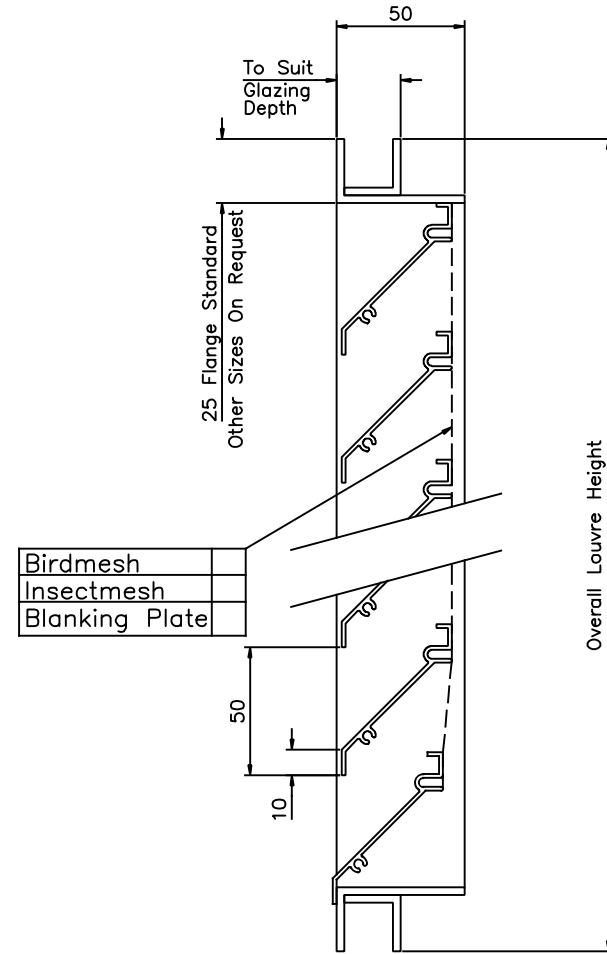
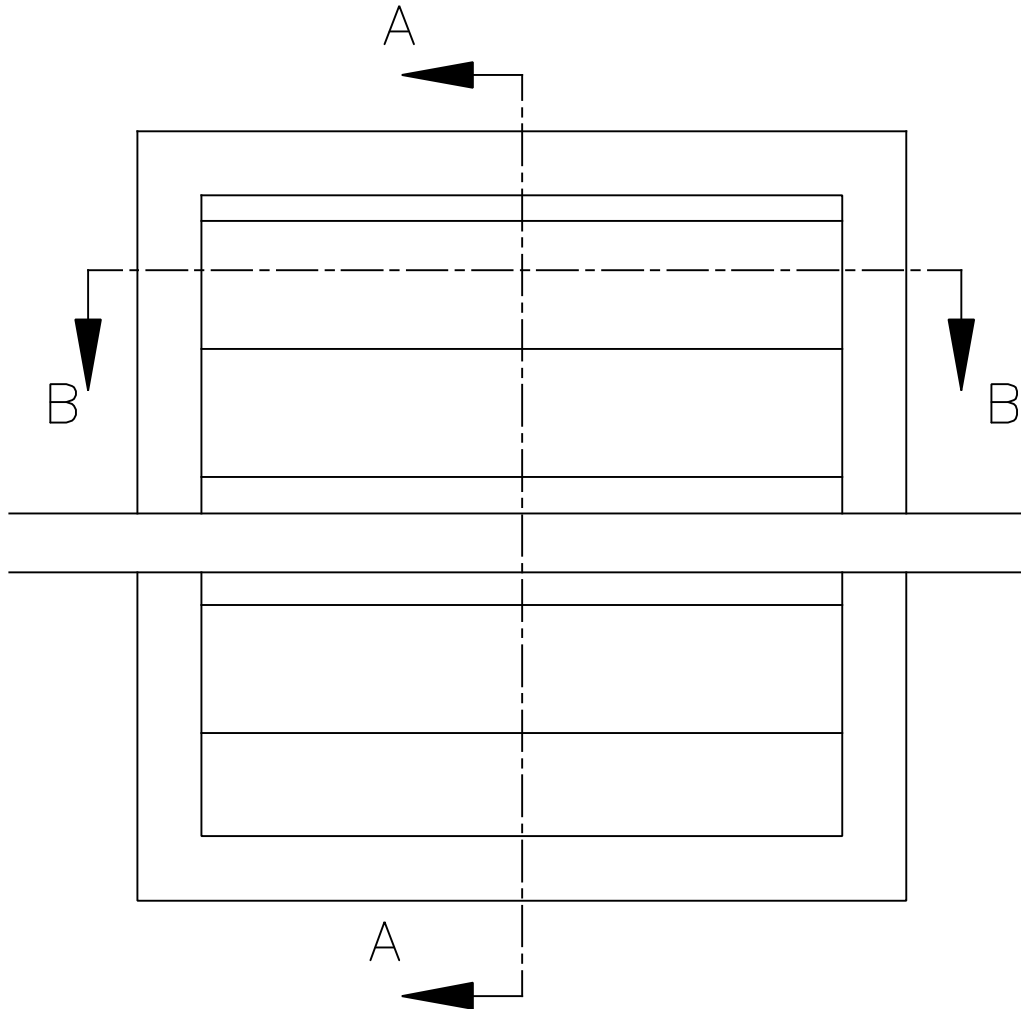
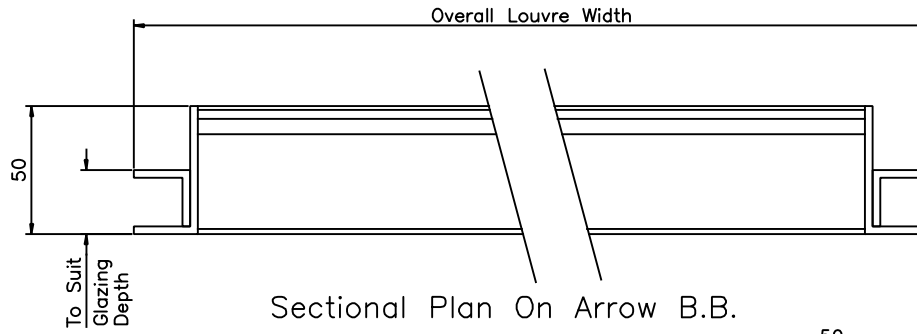


Overall Louvre Sizes			
Qty	Ref	Width (mm)	Height (mm)



Notes
 All dimensions must be checked on site and not scaled from this drawing

WL50 Louvre System

Material
 Extruded Aluminium Frame & Blades.

Blade Thickness 1.5mm
 Frame Thickness 3mm
 Louvre Depth 50mm
 Louvre Pitch 50mm
 Blade Angle 45°

Finish;
 Polyester Powder Coated
 Colour Ref _____

Date	Revisions

LINCO ENGINEERING
 MIDLANDS LTD
 88 Heming Road,
 Washford Industrial Estate,
 Redditch,
 WORCS,
 B98 0EA,
 TEL: (01527) 518333
 FAX: (01527) 518666
 e-mail: linco@btconnect.com
 www.lincoengineering.com



Client. _____

Project. _____

Drawing Title
**WL50 Aluminium
 Weather Louvre
 Glazing Frame**

Scale 1:1

Date Jan08 Drawn by K.P.

Dwg. No.	Rev.
WL50 06	—